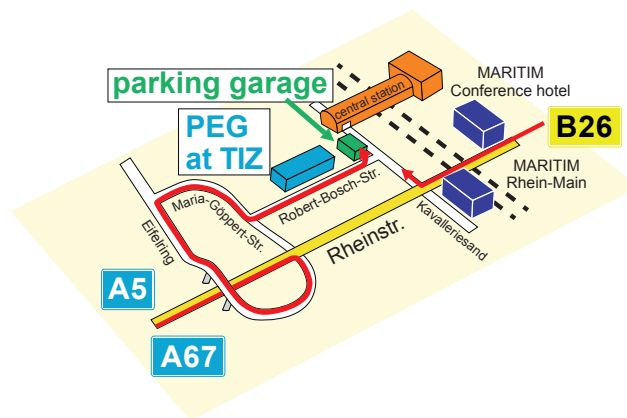


Travelling by train

From almost every large city trains regularly stop at the central station Darmstadt. ICE trains also stop here. From the central station (exit west) you can reach PEG GmbH (TEZ building) by foot in 5 minutes.

The train lines S3 and S4 of the Rhein-Main-transport federation (RMV) stop at the central station Darmstadt.

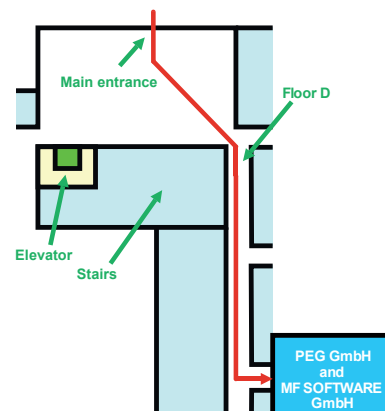


Travelling by tram

Line 9 (Böllenfalltor-Griesheim) and line 4 (Kranichstein-Griesheim during schooldays) stop at the station Mozartturm. Please go to the traffic light and turn left into Zweifalltorweg. After 200 meters turn left into Robert-Bosch-Straße.

How you find us in the building

You can find us on the ground floor in the hall D on the left side.



Kontakt:

Sven Theissen (Dipl.-Ing.)

Phone: +49 (0)6151 / 8504 020

Email: theissen@pe-group.de

Thomas Wittmann (Dipl.-Ing.)

Phone: +49 (0)6151 / 8504 010

Email: wittmann@pe-group.de